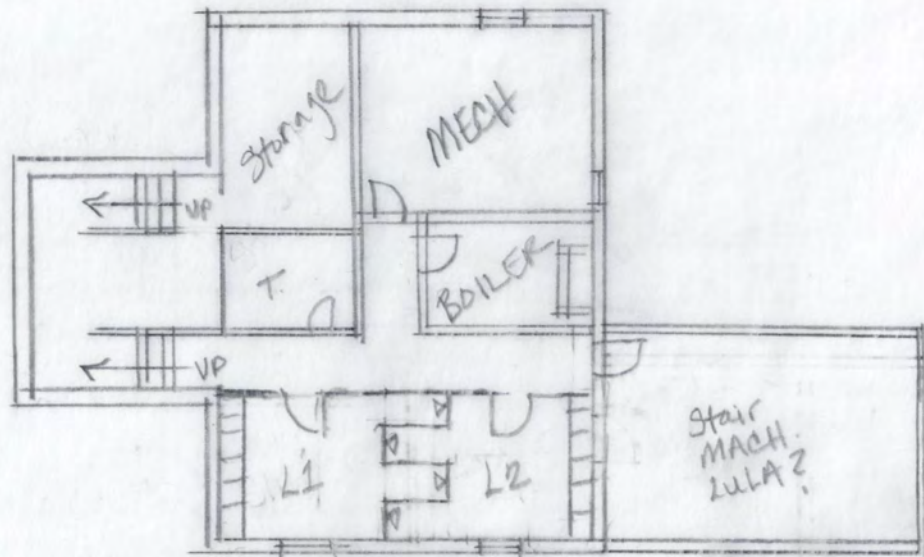


Lower Floor - Option 1 notes:

- entry from the East facing S. Road entrance
- 2 locker rooms with 2 showers and 6 lockers each
- 2 exits
- 1 single occupant ADA toilet
- Storage room



○ LOWER FLOOR - OPTION 1
 $1/16" = 1'-0"$

Copyright 2005
 Guilford Viman Viehmann
 Architects, Inc.
 All rights reserved.
 Consistency of Documents
 This document and the ideas and
 designs incorporated herein, as an
 instrument of professional service, is
 the property of Guilford Viman Viehmann
 Architects and is not to be used, in
 whole or in part, for this or for any
 other project without written
 authorization.

NOTES:

Common School
 Fairfield, Vermont

GUILLOT VIMAN VIEHMANN ARCHITECTS, INC. Burlington, VT 802.862.9631

DATE: 13 OCT 25

REVISED:

SCALE:

$1/16" = 1'-0"$

DRAWING:

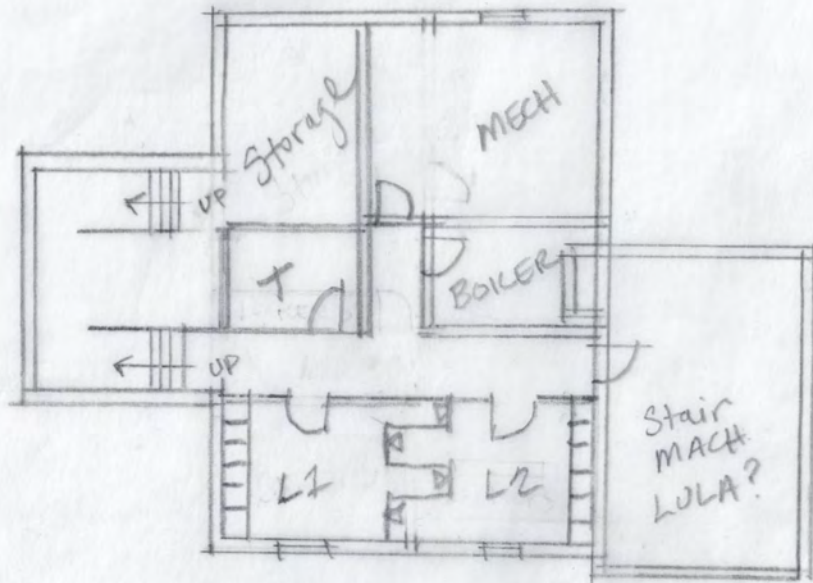
LF OPT1

SHEET:

SK1.0 A

Lower Floor - Option 2 notes:

- entry from the South facing fields
- 2 locker rooms with 2 showers and 6 lockers each
- 2 exits
- 1 single occupant ADA toilet
- Storage room



① LOWER FLOOR - OPTION 2
 $\frac{1}{16}'' = 1'-0''$

Copyright 2025
 Guilloit Vivian Viehmann
 Architects, Inc.
 All rights reserved.
 Ownership of Documents
 This document and the ideas and
 designs incorporated herein, as an
 instrument of professional service, is
 the property of Guilloit Vivian Viehmann
 Architects, Inc. and is not to be used, in
 whole or in part, for this or for any
 other project without written
 authorization.

NOTES:

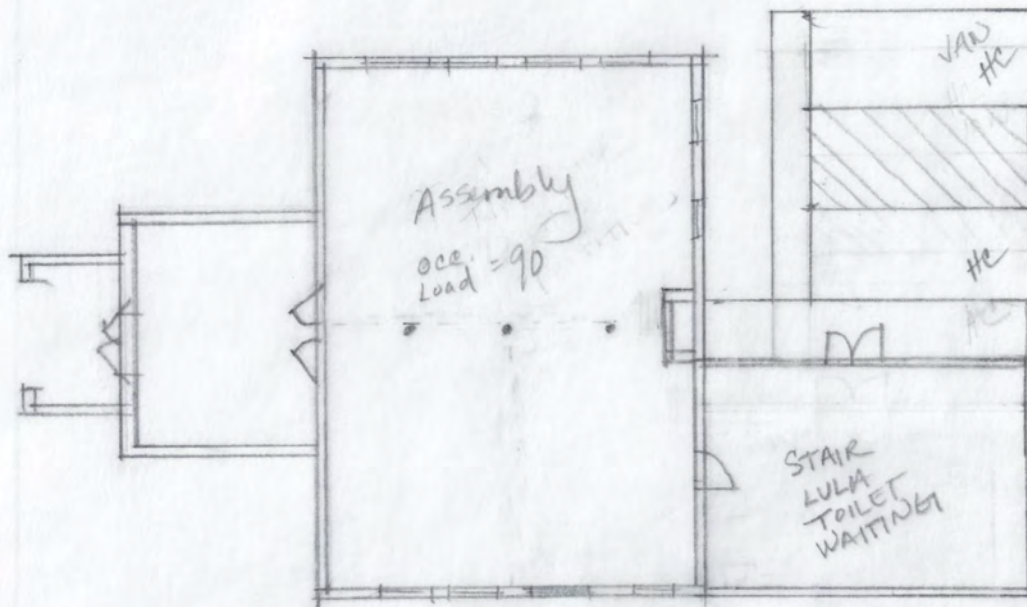
Common School
 Fairfield, Vermont

GUILLOT VIVIAN VIEHMANN ARCHITECTS, INC. Burlington, VT 802.862.9631

DATE: 13 OCT 25
 REVISED:
 SCALE:
 $\frac{1}{16}'' = 1'-0''$
 DRAWING:
 LF OPT2
 SHEET:
 SK1.0 B

First Floor - Option 1 notes:

- entry from the East facing S. Road entrance
- 1 large assembly room, flexible floor plan
- Uses:
 - Conference
 - Meeting
 - Reception Rental
 - Historical displays
 - Pre-game, Post-game meeting
- 2 ADA parking spaces



⊕ FIRST FLOOR - OPTION #1
 1/16" = 1'-0"

Copyright 2005
 Guillot Vivian Viehmann
 Architects, Inc.
 All rights reserved.
 Ownership of Documents
 This document and the ideas and
 designs incorporated herein, as an
 instrument of professional service, is
 the property of Guillot Vivian Viehmann
 Architects and is not to be used, in
 whole or in part, for this or for any
 other project without written
 authorization.

NOTES:

Common School
 Fairfield, Vermont

GUILLOT VIVIAN VIEHMANN ARCHITECTS, INC. Burlington, VT 802.862.9631

DATE: 13 OCT 25
 REVISED:
 SCALE:
 1/16" = 1'-0"
 DRAWING:
 FF OPT1
 SHEET:
 SK1.1 A

NOTES:

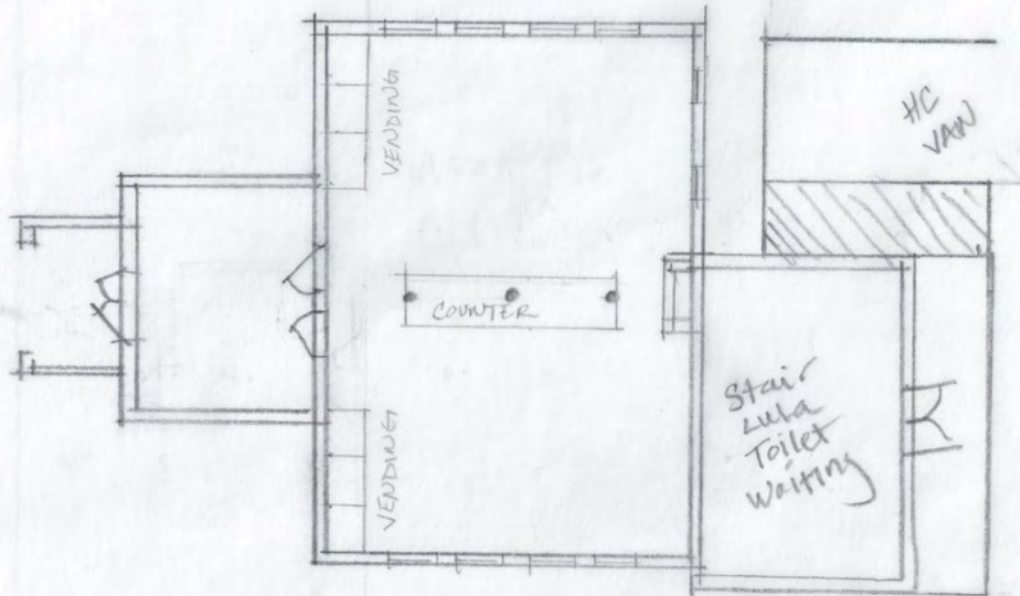
Common School
 Fairfield, Vermont

GUILLOT VIVIAN VIEHMANN ARCHITECTS, INC. Burlington, VT 802.862.9631

DATE: 13 OCT 25
 REVISED:
 SCALE:
 1/16" = 1'-0"
 DRAWING:
 FF OPT2
 SHEET:
 SK1.1 B

First Floor - Option 2 notes:

- entry from the South facing fields.
- large space divided by central counter/working table with cabinet storage below.
- Vending machines
- Uses:
 - Smaller conferences
 - Smaller Meetings
 - workshop space
 - student study
 - parent waiting/viewing
 - Pre-game, Post-game meeting
- 1 ADA parking spaces



① FIRST FLOOR - OPTION 2
 1/16" = 1'-0"

Second Floor - Option 1 notes:

- view from addition toward baseball field
- 1 flex space
- 2 mid-sized office/meeting/gathering
- Uses:
 - Office and/or sensory spaces for NCSS
 - Fitness/Wellness: senior movement, yoga...
 - Historical displays
 - Afterschool programming



2nd FLOOR - OPTION 1
1/16" = 1'-0"

Copyright 2005
Guillot Viman Viehmann
Architects, Inc.
All rights reserved.
Consent of Documents
This document and the ideas and
designs incorporated herein, as an
instrument of professional service, is
the property of Guillot Viman Viehmann
Architects and is not to be used, in
whole or in part, for this or for any
other project without written
authorization.

NOTES:

Common School
Fairfield, Vermont

GUILLOT VIMAN VIEHMANN ARCHITECTS, INC. Burlington, VT 802.862.9631

DATE: 13 OCT 25

REVISED:

SCALE:

1/16" = 1'-0"

DRAWING:

SF OPT1

SHEET:

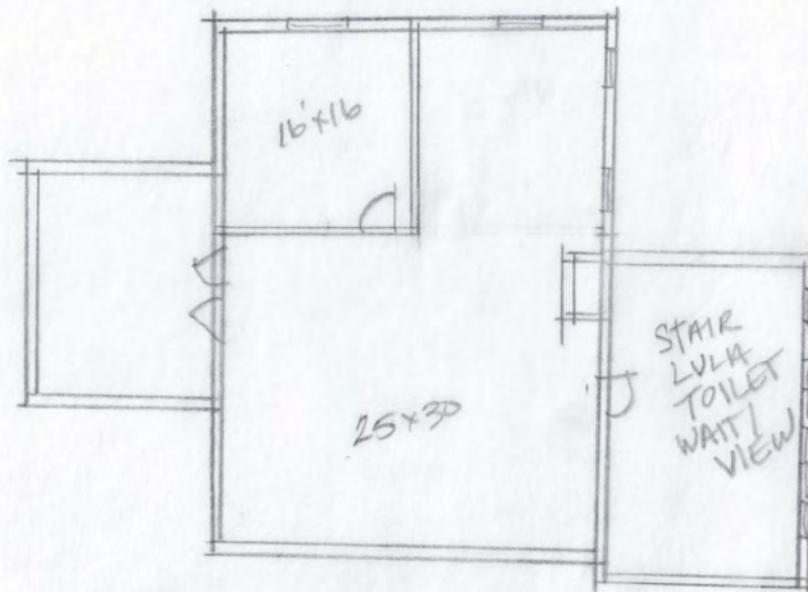
SK1.2 A

Second Floor - Option 2 notes:

- view from addition toward fields
- 1 flex space
- 1 mid-sized office/meeting/gathering
- 1 smaller open space

-Uses:

Childcare
Game/practice viewing
Arts & Crafts
Art & Music Therapy



② 2nd FLOOR - OPTION 2
1/16" = 1'-0"

Copyright 2005
Guillot Vivian Mehmann
Architects, Inc.
All rights reserved.
Consent of Documents
This document and the ideas and
designs incorporated herein, as an
instrument of professional service, is
the property of Guillot Vivian Mehmann
Architects and is not to be used, in
whole or in part, for this or for any
other project without written
authorization.

NOTES:

Common School
Fairfield, Vermont

GUILLOT VIVIAN MEHMANN ARCHITECTS, INC. Burlington, VT 802.862.9631

DATE: 13 OCT 25

REVISED:

SCALE:

1/16" = 1'-0"

DRAWING:

SF OPT2

SHEET:

SK1.2 B